

A VERSATILE MULTIMEDIA LANGUAGE-LEARNING CENTER



*SANAKO Lab 300 Media Assistant Duo
Student User Interface*

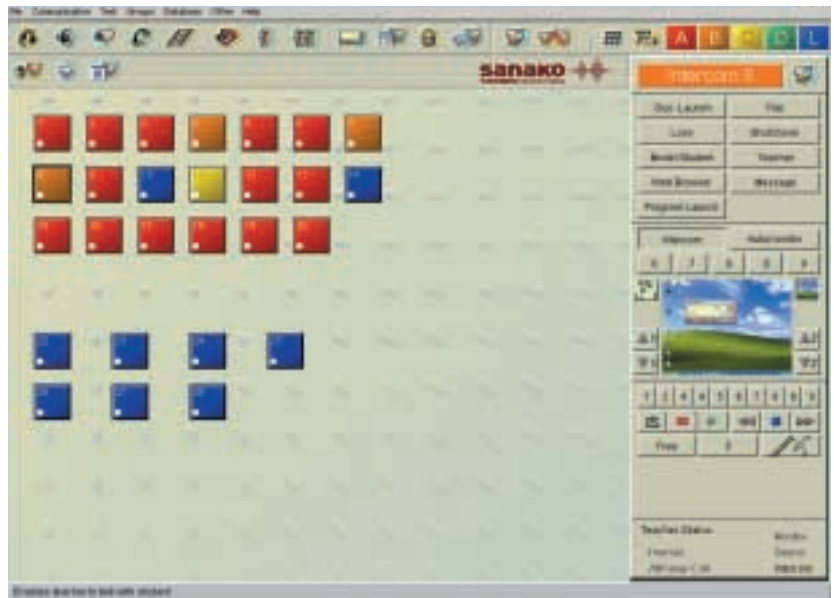
SANAKO Lab 300 is an innovative, easy-to-use language lab system that provides technological solutions for a versatile learning experience. With Lab 300, a teacher can structure, set up and run a PC-based language lab environment. Lab 300 offers high-quality audio, video and multimedia and enables the usage of a variety of learning resources.

TEACHER'S CHOICE

Sanako Lab 300 allows the teacher to view a graphical presentation of the classroom on his/her screen, create and work through lessons and exercises and to file, save and analyze test results. The seamless integration of the student user interface, **Media Assistant Duo**, with the Lab 300 Teacher Software's management capabilities allows both teachers and students to take full advantage of all the existing multimedia resources. The Lab 300 **Media Assistant Duo** has many powerful and fully interactive features, including digitization, saving in various formats, subtitling and bookmarks.

SMART INVESTMENT

The Lab 300 modular system is easy to set up and easy to use. It utilizes the latest IT solutions and has high-quality audio. The management and administration of all lab activities is done from Lab 300 Teacher Software. Different program source devices, such as CD and DVD players, VCRs and cassette recorders are easy to integrate into the Lab 300 system.



SANAKO Lab 300 Teacher Software

300 LAB



HIGH-QUALITY AUDIO FOR REALISTIC LEARNING EXPERIENCE

FUNCTIONALITY FOR THE TEACHER

Graphical User Interface

The graphical user interface of the Lab 300 Teacher Software provides a visual display of student seating layouts, functions and even student computer screens.

Communication

The teacher can speak to the entire class or to a selected group, as well as listen to a selected student and participate in a student's activity. The teacher can select students to work in groups, pairs, or to simulate telephone calls to each other.

Tests

Lab 300 counts and marks the answers to multiple-choice exercises, with results immediately displayed on a graph using the **Response Analyzer** function. Students' voice responses to oral tests may be either saved on a cassette tape or copied digitally onto the server.

Media and Resource Management

MediaManager offers an unlimited selection of attributes and values to describe and search for media resources in multiple dimensions (language, type, name, bibliography, access, method, etc.) **ResourceManager** is an administrative application for adding and maintaining information on system users, courses, workstations, and user sessions.

Classroom Management

With Lab 300, teachers can launch and close programs, copy and launch files on student PCs, shut down, restart and logoff the student PCs, and control the students' web browsers.

Program Source Control

The Program Source Control is integrated directly into the Lab 300 Teacher Software. For example, an external audio or video recorder or a CD player on the teacher's PC can be used as a Program Source. Four different program sources can be transferred to four different groups simultaneously.

FUNCTIONALITY FOR THE STUDENT

Media Playback

Media Assistant Duo includes a wide range of compatible media file formats.* Students can set bookmarks to mark selected places in a program track.

* Depending on existing Windows resources. Contact distributor or Sanako Corporation for details.

Recording

With two tracks for use - one for the program, the other for student recordings - digital learning material is played on the program track, and students can record their responses on the student track.

Digitizing and Capturing Learning Materials

With Lab 300 **Media Assistant Duo**, analog learning material can easily be converted to digital format. Audio learning material can be captured from other digital sources, and then converted to a format that can be used in the **Media Assistant Duo**.

Audio Active Comparative Corrective (AACC)

The AACC function creates a file that is divided into short stimulus or question-answer sections. In the AACC function, the Media Assistant Duo automatically shifts between the Program and Student tracks, which allows the student to listen and record by teacher-set-patterns.

Creating Texts

The **Text Synchronizing** function can be used to type a transcript of audio material, create subtitles for videos, or annotate the content of a program file. **Bookmarks** can be given descriptive names in order to easily recognize them.



SYSTEM COMPONENTS ARE EASY TO MANAGE



TEACHER

The intuitive setup application of the Lab 300 allows rapid configuration of the **Teacher Software**.

The **Master Audio Panel** contains the main power switch of the Lab 300, connectors for two external program sources, such as VCR or cassette recorders, controls for adjusting the volume, bass and treble levels for the classroom loudspeaker, and controls for adjusting volume for the headsets. The Lab 300 teacher position includes a high-quality headset.

The **System Connection Unit** connects the teacher's Master Audio Panel and the students' Headset Adapters with program source audios. Depending on the model, the System Connection Unit can be used to connect up to 48 or 96 students.

STUDENT

With the intuitive setup application of the **Media Assistant Duo** the teacher can optimize the volume levels for student positions. Students' headsets are attached to the students' **Headset Adapters**.

OPTIONAL ACCESSORIES

Program Sources (up to 8 sources)

Lab 300 allows up to 8 audio and video sources to be integrated into the system and used as program sources in Lab 300 lessons.

Video Distribution Network

The teacher can transfer analog video to student workstations that have a video overlay card. An **Infrared Device Controller** can be connected to the system for managing the video source directly from the Lab 300 computer.

Screen Transfer and Remote Control (hardware or software based)

With the Screen Transfer and Remote Control option, the teacher can transmit their screen to any workstation or group of workstations they select. The teacher can draw annotations to point out a detail in an image or a document, or choose to view student workstations as thumbnail images on the function panel. The remote control functionality provides tools for monitoring student activities, viewing the screen and accessing the computers of remote students from the teacher's workstation.



Headset TLH082

TECHNICAL SPECIFICATIONS

<p>SANAKO LAB 300 COMPONENTS</p> <ul style="list-style-type: none"> • Lab 300 Software (LSW300) • System Connection Unit (SCU048/SCU096) • Master Audio Panel (included in LSW300) • Lab 300 Media Assistant Duo software (DUO300) • Headset Adapter (HAD324/HAD301) • Headset (TLH082/TLH090) • Cable (CAB300) 	<p>HEADSET ADAPTER</p> <ul style="list-style-type: none"> • Operating Voltage 12 V (external or from SCU048) • Headset Connectors 2+2 • Audio Source Connector Line In, Line Out • Frequency Response 63 Hz - 16 kHz +/- 3 dB 	 <p>Headset TLH090</p>
<p>SYSTEM CONNECTION UNIT</p> <ul style="list-style-type: none"> • 48/96 Student Positions • 8 Program Sources • 2 Teachers • Program Source Input: 0.1-3 V / 22 kohm • Program Source Output: 0.3 V / 1 kohm • Power Supply: Operating Voltage 110/240 V, 50/60 H 	<p>HEADSET</p> <ul style="list-style-type: none"> • Microphone 30 mV/2.2 kohm (+6V), electret • Headphones impedance 200 ohm • Nominal level -10 dBV (0.3 V) 	
<p>MASTER AUDIO PANEL</p> <ul style="list-style-type: none"> • Power Amplifier 2x15 W (stereo) • Speaker volume range 64 dB, 2 dB steps • Treble 10 kHz +/- 12 dB • Bass 50 Hz +/- 12 dB • Teacher Headset Mic in (A) R 10 mV / 2k2 +6V (300 mV intercom line) • Teacher Headset Mic in (B) L 0,3 mV / 200 ohm (300 mV intercom line) • Headphone in 300 mV RMS (student headphone level) • Headphone volume 64 dB, 2 dB steps • Line out 300 mV RMS / 1 kohm (AGC) • Line in 300 mV RMS / 22 kohm (+6 dB over the adjustment point of AGC) 	<p>MINIMUM REQUIREMENTS</p> <p>Master Computer</p> <ul style="list-style-type: none"> • Microsoft® Windows XP or Windows 2000 • Pentium 700 MHz • 64 MB RAM • 70 MB free space • Sound Card (For a list of suitable sound cards, please contact your local distributor.) • SVGA video adapter (1024*768 High Color) • CD-ROM • Serial Port • Mouse • Local Area Network Connection • Parallel Port • Video Overlay Card (Optional) 	<p>Student Computer</p> <ul style="list-style-type: none"> • Microsoft® Windows XP or Windows 2000 • Pentium 700 MHz • 64 MB RAM • 20 MB free space • Sound Card (For a list of suitable sound cards, please contact your local distributor.) • SVGA video adapter (1024*768 High Color) • CD-ROM • Mouse • Local Area Network Connection • Video Overlay Card (Optional)
<p>Designed and manufactured in Finland.</p>	<p>SANAKO SOFTWARE MAINTENANCE (OPTIONAL)</p> <p>Software Maintenance gives added value to the customer's technology investment. Software Maintenance allows Sanako software users to receive updates that are available in the coverage period without paying an update charge.</p> <p>Sanako works with its customers to ensure long-term customer success and satisfaction. For further information on Software Maintenance and pricing, please contact your local representative.</p>	
	<p>Sanako Corporation Kaurakatu 46, P.O. Box 41, FIN-20741 Turku, FINLAND, info@sanako.com, www.sanako.com</p> 	