



SANAKO STUDY 100 DATASHEET



A MANAGED LEARNING SOLUTION

SANAKO Study 100 is a unique tool designed to facilitate the preparation, delivery and management of digital lessons. It is especially effective in the ICT classroom, where it uses modern information technology to breathe new life into the teaching and learning of any subject.

This classroom management tool is a foundation for multimedia interaction, which provides the student with a stimulating and productive learning environment with the teacher acting as tutor, resource and interactive supervisor.

A collection of easy-to use resources and tools have been combined to ensure that SANAKO Study 100 helps students and teachers get the best performance out of their ICT classrooms.

NEW FEATURES AND FUNCTIONALITIES IN SANAKO STUDY 100 V 5.0

The new version of SANAKO Study 100, v.5.0, allows the Tutor program to be used in two different modes, **Administrator** and **Tutor**, thus providing improved control over portfolios, student layouts, system settings and system security. This clarifies the use of Study 100 by creating separate modes for administrative functions and the actual teaching.

ADD EXCITEMENT WITH DIGITAL LEARNING RESOURCES

SANAKO Study 100 puts a range of digital resources at the teacher's fingertips, to make instruction exciting and appealing. Teachers can use the system to access recorded video and audio material, and can even digitize old material that had previously been stored in analog form, to maintain its quality and lengthen its shelf life.

SAVE TIME WITH LESSON PLAN PORTFOLIOS

Teachers can make use of this system's lesson plan portfolios, and save preparation time by linking web-based content or other digital resources together with a lesson or project plan in a single file.

Using the lesson plan portfolio, tutors can remotely launch applications, files and web pages from their own computers to selected students' workstations. They can also launch or copy the material, either individually or as part of a project folder, to automate the delivery of learning resources, tests or assignments.



Control and monitoring features in SANAKO Study 100 keep the teacher involved.



STAY INVOLVED WITH CONTROL AND MONITORING FEATURES

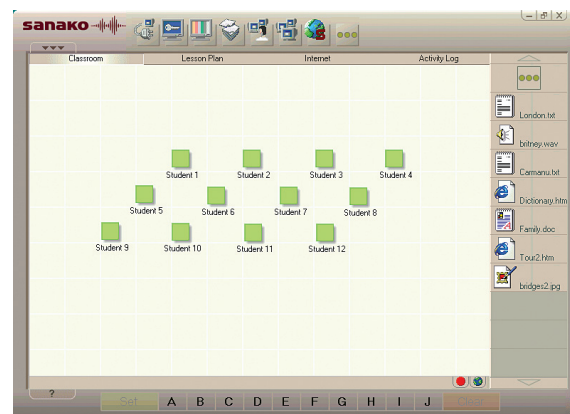
One popular SANAKO Study 100 feature allows the teacher to remotely control and monitor student PCs, lock and unlock student workstations, and keep track of the time allocated for classroom assignments.

EXPAND TEACHING CONTENT WITH WEB-BASED LEARNING

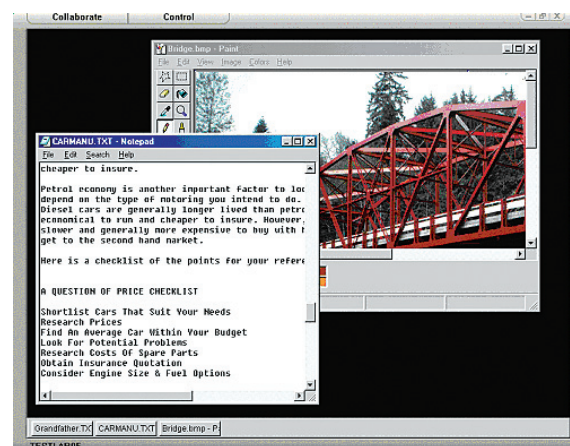
Lesson plan portfolios enhance lesson content by linking web-based material to a lesson plan or project plan in a single file. Teachers can use the tutor application to browse the web for suitable material, link it to the desired lesson plan, and launch it to selected student workstations with a single mouse click.

CONTROL WEB-BROWSING

With Sanako Study 100 the teacher can control students' Web access by choosing either **strict** or **open** mode when launching Web links to students. When the links are opened in strict mode, the students are only allowed to visit Websites in the lesson plan.



SANAKO Study 100 teacher view.



SANAKO Study 100 student view.

MAIN COMPONENTS OF THE SANAKO STUDY 100 SYSTEM

SANAKO Study 100 utilizes the latest technology to control classroom computers and their applications through a local area network (LAN). It is a pure software solution that does not require dedicated hardware or wiring. The Sanako Study 100 software kit has 3 main components:

○ The **Tutor component** is the main interface with the system. It allows the teacher to take control of the classroom computers, their software, and how they are used by students.

○ The **Client components** of the system can be found on the workstations, and respond to commands sent by Study 100 Tutor. Sanako Client connects to the Crossroad component at start up and starts listening for commands, and runs in the background totally invisible to the user.

○ **Sanako Crossroad** is the information center of the Study 100 system. All the other components connect through this server and all system control data pass through it to be routed to the clients, and to monitor the clients' status.

For additional information contact your reseller or visit our website at www.sanako.com.



SANAKO products are designed and manufactured in Finland.

SANAKO Corporation, Kaurakatu 46, P.O. Box 41, FI-20741 Turku, FINLAND, info@sanako.com, www.sanako.com